

## / FROM CHAOS TO QUIET

You work very hard, at a breakneck pace in a world in constant flux, perpetually rushing, pushing, pounding, constantly racing, chasing. Wishing that instead you were at your favorite tropical paradise, that place you vacation to once a year or twice at most.

Sipping on a refreshing piña colada instead of that double espresso on your desk. Watching the waves caress the shore instead of emails flooding your inbox with more things to do. Loving the feel of the sand beneath your feet instead of the pressures of your daily existence...

What if you could have that holiday, every single day?

What if paradise was in your own backyard?

What if your escape, your respite, your most desired concept of



## / FROM CHAOS TO QUIET

You work very hard, at a breakneck pace in a world in constant flux, perpetually rushing, pushing, pounding, constantly racing, chasing. Wishing that instead you were at your favorite tropical paradise, that place you vacation to once a year or twice at most.

Sipping on a refreshing piña colada instead of that double espresso on your desk. Watching the waves caress the shore instead of emails flooding your inbox with more things to do. Loving the feel of the sand beneath your feet instead of the pressures of your daily existence...

What if you could have that holiday, every single day?

What if paradise was in your own backyard?

What if your escape, your respite, your most desired concept of

## / MASTERPLAN

The Azure is expected to have 9 environmentally responsive buildings that seek to set a new benchmark for 21st century tropical living.

Designed by the award-winning masterplanning and architectural firm Broadway Malyan, each tower is set in a breathtaking tropical modern aesthetic that provides optimal natural ventilation, light, and shade.

A kidney bean-shaped clubhouse complements an organically formed lustrous landscape that capitalizes on the uniqueness of an artificial beach. This in turn asserts a sense of identity and legibility to the different character areas within the 6-hectare site.

Other amenities like an open park, zen garden, multiple playgrounds, lap pool with cascading waterfalls, kiddie water slide, poolside bar, beach volleyball area and a basketball court have been incorporated into the master plan, adding rich diversity to a natural environment that supports recreation, health and well being.





## / MASTERPLAN

The Azure is expected to have 9 environmentally responsive buildings that seek to set a new benchmark for 21st century tropical living.

Designed by the award-winning masterplanning and architectural firm **Broadway Malyan**, each tower is set in a breathtaking tropical modern aesthetic that provides optimal natural ventilation, light, and shade.

A kidney bean-shaped clubhouse complements an organically formed lustrous landscape that capitalizes on the uniqueness of an artificial beach. This in turn asserts a sense of identity and legibility to the different character areas within the 6-hectare site.

Other amenities like an open park, zen garden, multiple playgrounds, lap pool with cascading waterfalls, kiddie water slide, poolside bar, beach volleyball area and a basketball court have been incorporated into the master plan, adding rich diversity to a natural environment that supports recreation, health and well being.

PAUSE ||

## / AZURE BEACH

Your slice of paradise within the bustling metropolis.

The centerpiece of *The Azure* is the truly iconic and first of its kind man-made beach cove complete with fine beach sand, undulating waves, water slides and water cascades. It truly is a tropical vacation you can come home to every single day!

HIDE TEXT ▶

PAUSE ||

## / AZURE BEACH

Your slice of paradise within the bustling metropolis.

The centerpiece of *The Azure* is the truly iconic and first of its kind man-made beach cove complete with fine beach sand, undulating waves, water slides and water cascades. It truly is a tropical vacation you can come home to every single day!

HIDE TEXT ▶



## / AZURE BEACH

Your slice of paradise within the bustling metropolis.

The centerpiece of *The Azure* is the truly iconic and first of its kind man-made beach cove complete with fine beach sand, undulating waves, water slides and water cascades. It truly is a tropical vacation you can come home to every single day!



## / RIO

As the first building set to rise in Azure, *The Rio* is named after Rio de Janeiro, the Marvelous City of Brazil and home to world-famous tourist beaches and beautiful Bossa Nova music.

*The Rio* captures the fun, festive and relaxed summer atmosphere of its Latin American inspiration. Like the sprawling beachside neighborhoods of its namesake, *The Rio* is designed with high regard for space, nature, and conveniences.



## / SANTORINI

The second building rising at the Azure is inspired by the small group of Greek islands surrounded by the legendary Aegean sea. Great poets have sung it praises, with its historic and iconic whitewashed stone architecture, spectacular ocean views and its picturesque sunsets.

The *Santorini* tower at The Azure celebrates the unsurpassed beauty of its Mediterranean namesake, evoking its sun-kissed charms and the unmatched privacy that truly embodies the perfect island getaway.

The *Santorini* is designed in a combination of modern and rustic influences; a true urban beach sanctuary that you can call home.

*the santorini*

AZURE URBAN RESORT RESIDENCES

HIDE TEXT ►

A woman with long dark hair in a ponytail, wearing a vibrant green strapless dress and a black wristband, is shown in profile, looking down. She is standing on a beach with the ocean and a cloudy sky in the background.

**IMAGINE...**

**BEACHFRONT**  
PROPERTY



SUN, SAND,  
SERENITY

eight minutes from Makati

A woman with dark, wet hair is shown in profile, resting her head on a light-colored, textured ledge. She is wearing several bracelets on her left wrist: two black and white patterned bangles and one gold and black leopard print cuff. Her right hand is also resting on the ledge. The background is a vibrant, clear blue, suggesting a pool or ocean. The overall mood is serene and refreshing.

azure  
URBAN RESORT RESIDENCES



*the st. tropez*  
AT THE AZURE

/ ST. TROPEZ

ST. TROPEZ (sun-tro-pay) is one of the most celebrated seaside towns on the [French Riviera](#), and is known today as the playground to jetsetters, models, and millionaires.

It remains a picture-perfect postcard: from its pink ochre buildings with red-tile barrel roofs, blue and white shutters to the historic forts crowning rose-hued rocks that oversee the forest of masts that sprout from million-dollar yachts making their home in its sparkling sapphire water.

This exquisite summer destination of which the French daily Figaro once noted as having "the greatest number of famous faces per square meter", becomes the dazzling inspiration behind the St. Tropez tower, the [third building](#) set to rise at the Azure.



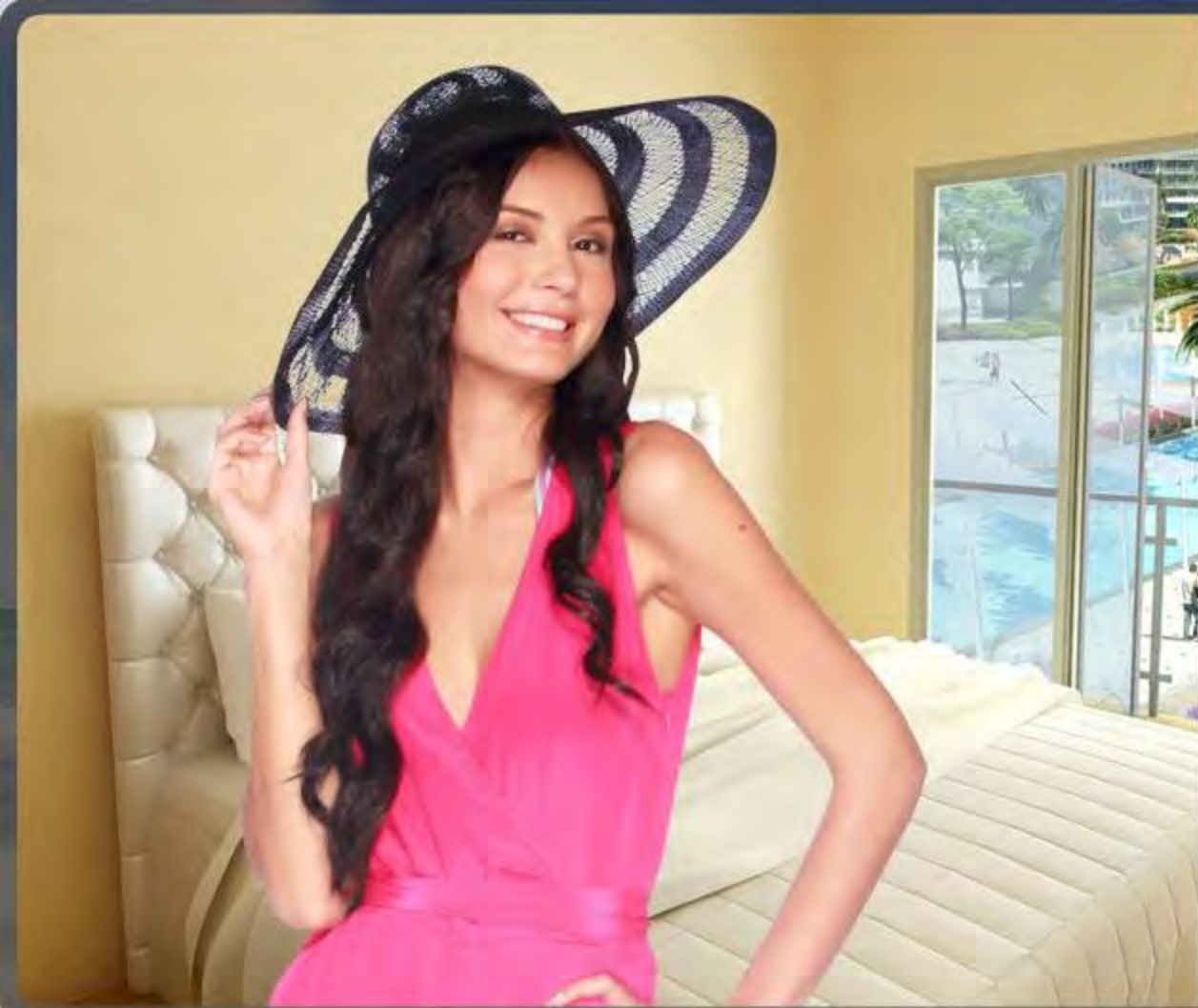
# POSITANO

AT THE AZURE

## / POSITANO

POSITANO is a small town dramatically perched on the rocky hills of the Amalfi Coast in Campania, Italy. Its quaint buildings cling, in tiers to the rock face, and small houses, huddle on top of each other, becoming the subject of endless photos. A wonderful kaleidoscope of vibrant colors; from the white of the buildings that form a perfect canvas for the bright flowers which decorate the houses, to small artisans' shops draped in multihued cloth, create a vista that is a true a visual siege of delight for all who come to visit.

The Positano, as the fourth building set to rise at the Azure, takes much inspiration from this idyllic Italian port city, bringing its rich tapestry of colors into Century's hottest new masterplanned development.



## / FLOOR & UNIT PLANS

To echo your most desired resort-style living, units at the Azure have been designed to suit your need for functional living space. Ample areas for living and dining room, bedroom, bathroom, kitchen and balconies have been created to complement the true urban dweller's easy breezy lifestyle.

Units available in 1-bedroom, 2-bedroom, and 3-bedroom configurations.

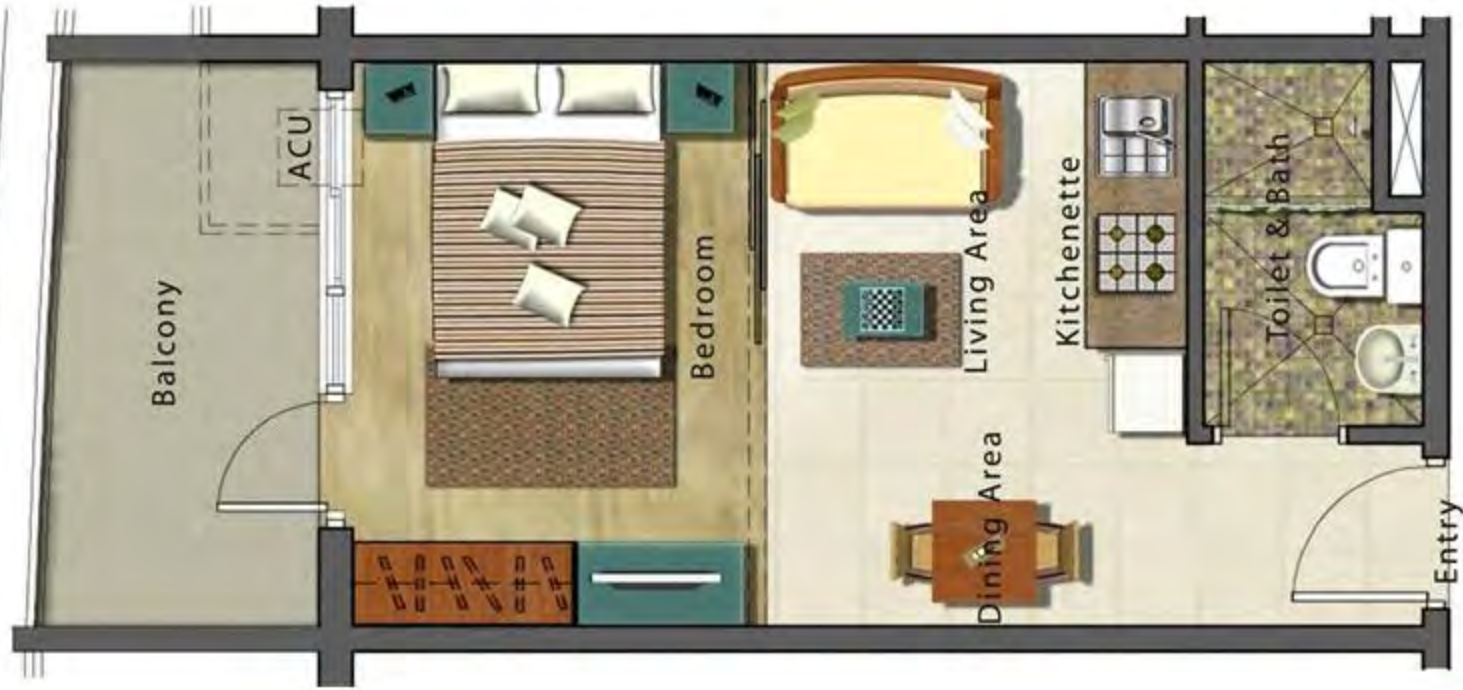
### THE RIO

- 1 BEDROOM
- 2 BEDROOM STANDARD
- 3 BEDROOM COMBINED
- 2 BEDROOM CORNER
- 2 BEDROOM SUITE

HIDE TEXT ▶

# 1 BEDROOM UNIT

AREA: 26.77 to 29.58 SQM





*rio*  
AZURE URBAN RESORT RESIDENCES

## 2 BEDROOM STANDARD

TWO INNER 1BR UNITS COMBINED

AREA: 53.84 SQM to 59.16 SQM

SHOW TEXT



*rio*  
AZURE URBAN RESORT RESIDENCES

## 3 BEDROOM COMBINED 3 INNER 1BRs COMBINED

AREA: 80.31 SQM to 88.74 SQM

SHOW TEXT



*rio*  
AZURE URBAN RESORT RESIDENCES

## 2 BEDROOM SUITE 2BR CORNER UNIT + INNER UNIT

AREA: 53.3 SQM to 64.35 SQM

SHOW TEXT



SHOW TEXT



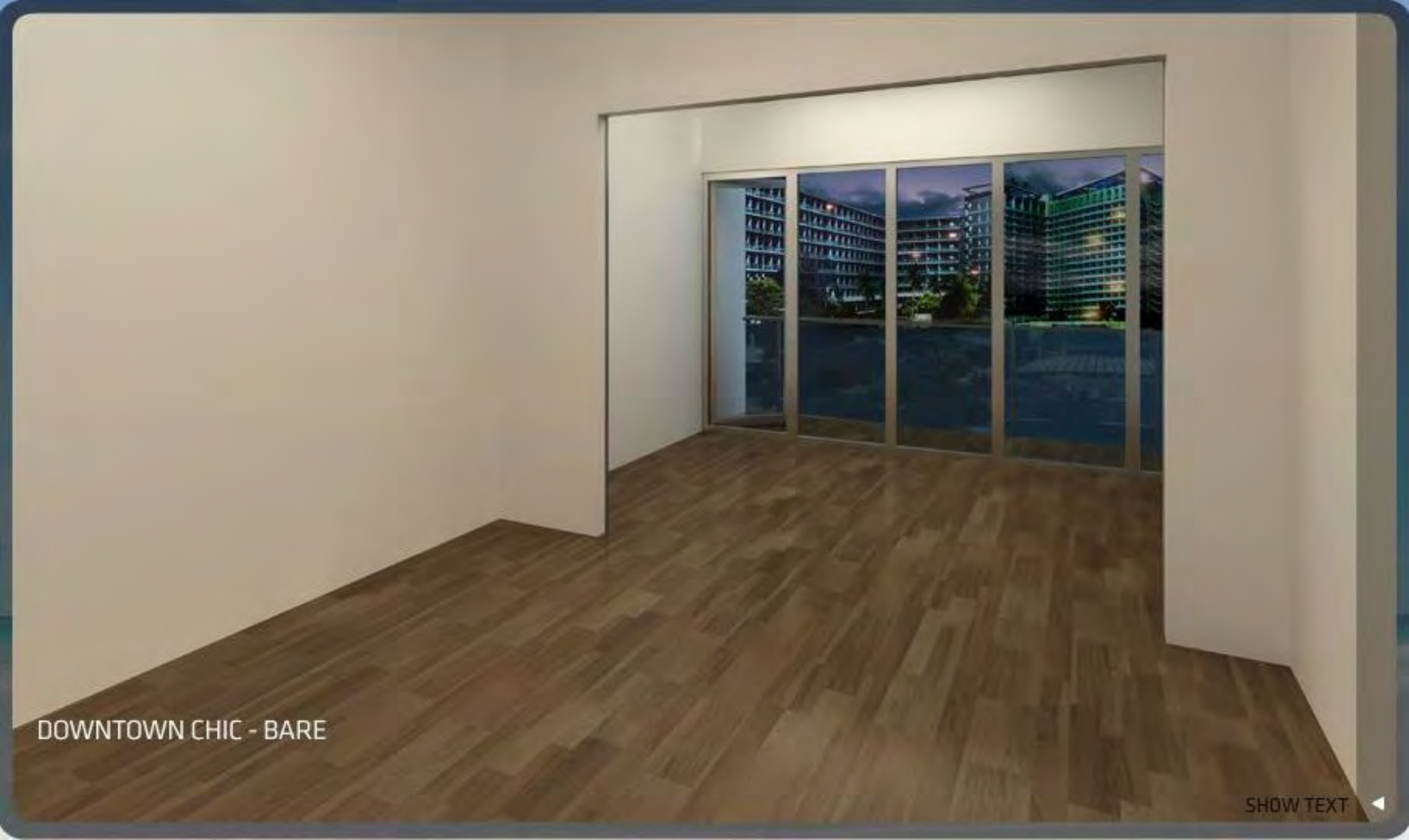
## / INTERIOR DESIGN IDEAS

Pioneered by Century Properties, the Azure also offers Standard Bare or Fully-fitted units with two (2) contemporary interior designs to choose from: Downtown Chic and Asian Modern

- DOWNTOWN CHIC - STANDARD BARE
- DOWNTOWN CHIC - FULLY FITTED
- DOWNTOWN CHIC - MODEL UNIT
- ASIAN MODERN - STANDARD BARE
- ASIAN MODERN - FULLY FITTED
- ASIAN MODERN - MODEL UNIT


*\* The Model Units depicted are merely intended as inspiration for buyers. Units at the Azure will NOT be delivered with the interiors shown in these illustrations. The Fully-Fitted Package starts at additional 7,000 pesos per sqm.*

**\*Standard units have painted white**




DOWNTOWN CHIC - BARE

SHOW TEXT ◀



**DOWNTOWN CHIC - FULLY FITTED**

Mattress, pillows, sheets are not included. For a complete list of unit inclusions under the Fully-Fitted and Fully-Furnished package, please inquire from your Century Sales Officer.

SHOW TEXT 



## DOWNTOWN CHIC

The Model Units depicted are merely intended as inspiration for buyers. Units at the Azure will NOT be delivered with the interiors shown in these illustrations

SHOW TEXT

ASIAN MODERN - BARE

SHOW TEXT

A modern bedroom featuring a bed with a white mattress and a wooden frame. The bed is positioned against a light-colored wall. To the right, a large glass window provides a view of an outdoor swimming pool area with palm trees and a building in the background. The floor is made of light-colored wood.

## ASIAN MODERN - FULLY FITTED

Mattress, pillows, sheets are not included. For a complete list of unit inclusions under the Fully-Fitted and Fully-Furnished package, please inquire from your Century Sales Officer.

SHOW TEXT ◀